



**THE MANHATTAN
REGATTA
2012**

Dear Sailors:

Welcome to the 2012 edition of The Manhattan Regatta.

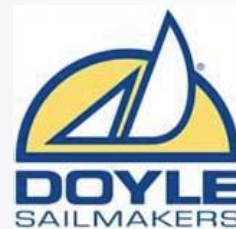
This weekend will provide a thrilling and unique racing experience set against the Manhattan skyline. The challenge of navigating between tugs, barges, the Staten Island ferry and the occasional cruise ship, whilst in a strong current, makes for complex tactics and intense competitive racing.

This is an event dedicated solely to the J105 class. We expect to see about a dozen boats from Fleet 6 and Fleet 10. Courses will be a mix of Windward-Leeward & distance types under the watchful gaze of the statue of liberty.

Social events include an outdoor barbeque aboard Liberty State Park's lightship on Saturday at 1730 and an awards party at North Cove Marina on Sunday after racing. There will also be a raffle sponsored by Landfall Navigation along with Digitalphotobooth for crew snapshots. Racing photography by Pim van Hemmen.

Please bring family and friends to watch the action or to join the party. Never far from the shores of either New York or New Jersey the race provides spectators, and tourists alike with the site of big boat racing. Probably the only local sailing event where spectators can watch a regatta without ever leaving land.

David Spence
Fleet 10 Captain



Sailing Instructions – The Manhattan Regatta 2012

Organizing Authority (OA) – J/105 Class Fleet 10

1. RULES

- 1.1. The regatta will be governed by the rules as defined in *The Racing Rules of Sailing* (RRS) and by the Class Rules (CR) for the J/105 class, as amended by these SIs.
- 1.2. Should there be a conflict between the sailing instructions and the Notice of Race (NOR), the sailing instructions will take precedence. This changes RRS rule 63.7.

2. NOTICES TO COMPETITORS

- 2.1. Notices to competitors will be posted on the event website:
<http://www.yachtscoring.com/emenue.cfm?eID=603>
- 2.2. Copies may be available on notice boards located on the Manhattan Sailing Club floating classroom in the North Cove and at Liberty Landing Marina (LLM).

3. CHANGES TO SAILING INSTRUCTIONS

- 3.1. Any change to the sailing instructions will be posted on the event website before 0900 on the day it will take effect.
- 3.2. Any change to the schedule of races will be posted on the event website before 2000 on the day before it will take effect.
- 3.3. The Race Committee (RC) may make changes to these sailing instructions verbally on the water via VHF Ch 69, at its sole discretion.

4. SIGNALS MADE ASHORE

- 4.1. Signals made ashore will be displayed at the Manhattan Sailing Club Floating Classroom, The North Cove.
- 4.2. When flag AP is displayed ashore, '1 minute' is replaced with 'not less than one hour' in the race signal AP description. This changes RRS Signals.

5. SCHEDULE OF RACES

- 5.1. It is the intention of the RC to run as many races as possible. Code Flag 'A' displayed either at or soon after the finish indicates that there will be no further racing that day. Also, it is the RC's intention not to have a warning signal after 1605 on Saturday or 1500 on Sunday.
- 5.2. The warning signal for the first race on Saturday will be at 1155, following the Atlantic Cup (AC) event start, which is scheduled for 1100. On Sunday, the first warning signal will be at 1025.

6. CLASS FLAGS

- 6.1. The class flag will be the J/105 Class flag or Code Flag number 1.

7. RACING AREA

- 7.1. Appendix 1 shows the approximate location of the racing area and start areas.
- 7.2. Races will be held in Upper Hudson Bay. The Upper Hudson Bay is a commercial and recreational area; there will be ferries, barges, tugboats and other commercial and recreational vessels transiting the area.
- 7.3. For the first race only on Saturday, the RC will be located onshore at the AC event venue along the North Cove Seawall. For Subsequent races on Saturday, the RC will be located on the Honorable William Wall (WW) or a motor yacht on Sunday.
- 7.4. All J/105 competitors shall keep well clear of any Atlantic Cup yachts during their starting sequence or while AC yachts are racing.

8. THE COURSES

- 8.1 The course to be sailed will be posted by the Race Committee no later than the warning signal. The courses may be windward-leeward utilizing inflatable drop marks, or preset courses using government marks. The government mark courses and mark descriptions are listed in SI Appendix 2. An example of a windward leeward course is diagramed in SI Appendix 3.
- 8.2 It is the intention of the Race Committee to sail the first race on Saturday as a government race starting from the North Cove Seawall. See section 9.2 under marks
- 8.3 The Race Committee will indicate the course no later than the Warning Signal, on a Course Board. For windward-leeward courses, the number of legs to be sailed, the distance and the bearing to the first mark will be posted. For the government marks courses, the Race Committee will post a "G" and a number corresponding to the Course number. Courses will also be announced via VHF radio on channel 69.
- 8.4 For windward-leeward courses, all marks shall be rounded to port.

9. MARKS

- 9.1. For the windward-leeward courses, rounding marks will be yellow inflatable buoys. For the government mark courses, marks will be government aids to navigation buoys whose locations are indicated on the attached course chart.
- 9.2. The starting and finishing mark will be the course mark near the RC boat. (a yellow or yellow/black inflatable buoy) except for the first race on Saturday whereas the starting marks will be two orange tetrahedrons. The yellow start/finish mark may also be the leeward rounding mark.
- 9.3. A buoy may be deployed by the signal boat, and is to be considered a part of the signal boat under RRS 31. (floating, not anchored)

10. THE START

- 10.1. The starting line will be between a staff displaying an orange flag by the race committee and the course side of the starting mark, except for Saturday's first race whereas the starting line will be between two orange tetrahedrons.

- 10.2. A boat starting later than 5 minutes after her starting signal will be scored DNS. This changes RRS A4 and A5.

11. RECALLS

- 11.1. The race committee may courtesy hail boats identified as on the course side at the start by sail number or boat name on VHF CH 69. Any actions of the RC with respect to such courtesy hails is not a basis for redress. This changes RRS 62.1(a).

12. CHANGE OF THE NEXT LEG OF THE COURSE

- 12.1. To change the next leg of the course, the race committee may lay a new mark (or move the finishing line) and remove the original mark as soon as practicable. If there is a course change that requires a new mark, that new mark will be a yellow & back inflatable ball buoy. When in a subsequent change a new mark is replaced, it will be replaced by an original mark.

13. THE FINISH

- 13.1. The finishing line will be between a staff displaying an orange flag by the RC and the course side of the finishing mark.

14. PENALTY SYSTEM

- 14.1. Rule 44.1 is changed so that the Two-Turns Penalty is replaced by the One-Turn Penalty unless the incident occurs in the Zone in which case the Two-Turn Penalty applies.

15. TIME LIMITS

- 15.1. Time limit for each race will be two hours.
- 15.2. Boats failing to finish within 30 minutes after the first boat sails the course in accordance with RRS 28, and finishes will be scored DNF without a hearing. This changes RRS 35, 63.1, A4 and A5.

16. PROTESTS AND REQUESTS FOR REDRESS

- 16.1. Protest forms are available at the LLM light ship on Saturday and the Floating Classroom at the North Cove on Sunday. Protests and requests for redress or reopening shall be delivered at their respective locations within the appropriate time limit.
- 16.2. Protest hearings will be held after each day of racing, at the LLM lightship on Saturday and the North Cove floating classroom Sunday. Parties to a protest should report to the either location for further directions to the protest committee.
- 16.3. It is the responsibility of the parties to ensure that their witnesses are available when called to testify. If witnesses are not in the vicinity of the protest committee area when called, they may not be heard.
- 16.4. Notices of protests by the race committee or protest committee will be posted to inform boats under rule 61.1(b) on the official notice board.

- 16.5. On the last day of the regatta, rules 66, 62.2, and the US SAILING prescription to rule 62.2 are changed such that a request for reopening a hearing or a request for redress based on an action or omission of the jury shall be delivered within the protest filing deadline if the requesting party was informed of the decision the previous day; no later than 30 minutes after the requesting party was informed of the decision on that day; or no later than 30 minutes after a signal to abandon racing is displayed ashore.
- 16.6. Intention to protest for a rule of Part 2 and the boat being protested shall be signaled to the Race Committee on the VHF Channel 69 at the finish of a race, until acknowledged by the Race Committee. This modifies rule 61.1(a).
- 16.7. The protest time limit in rule 61.3 is 30 minutes after the Race Committee Signal Boat docks. Notices will be posted to inform competitors of protest hearings in which they are parties as soon as possible after the protest time limit. Hearings will be held as soon as possible, approximately in the order received. Location and times will be posted.
- 16.8. Boats may not protest other boats for breaches of: retirement from race notification, safety equipment, and disposal of trash. The penalty for breaking these rules is at the discretion of the Protest Committee and may be less than disqualification. This changes rule 60.1(a).

17. SCORING

- 17.1. The scoring system will be the Low Point System and each boat's regatta score will be the total of that boat's scores in all the races. There will be no excluded races. This changes RRS A2.
- 17.2. One race will constitute a series.

18. SAFETY REGULATIONS

- 18.1. USCG approved personal flotation devices (PFD) shall be worn by all crew aboard at all times.
- 18.2. Any boat withdrawing before the start or retiring from a race shall notify the race committee as soon as possible on VHF channel 69.
- 18.3. Security Zones – The USCG has established a 150-yard security zone around Ellis and Liberty Islands as shown in Appendix 4. Additionally there is a 100-yard security zone around all US Naval or Coast Guard vessels. These security zones are considered obstructions on the racecourse and no boat is allowed to sail inside the security zones. Security Zones are marked with white buoys with orange bands and diamonds.
- 18.4. Weather Protocols – In accordance with the USCG Marine Event Permit, there may be no racing if the wind gusts to speeds greater than 25 knots, there is lightning, thunderstorms or visibility is less than 1 nautical mile. A race may be postponed or abandoned if any of these conditions exist. If a race is abandoned for weather, teams will be notified via VHF Ch 69 and may be directed to proceed to the berthing areas.

19. REPLACEMENT OF CREW OR EQUIPMENT

- 19.1. Substitution or repair of damaged or lost equipment must comply with or conform to the class rules and be approved by the J/105 Class Association Fleet 10 Measurer or his designee.

20. ADVERTISING

- 20.1. Pursuant to CR 2.8 and ISAF Regulation 20, ISAF Advertising Code, including ISAF Regulation 20.5.6(a), no advertising shall be permitted on boats.

21. HAUL-OUT RESTRICTIONS

- 21.1. All boats shall be launched by 1700 hours on May 18, 2011 and must remain in the water through the end of the regatta. Boats shall not be hauled out during the regatta except with and according to the terms of prior written permission of the protest committee, after consultation with the J/105 Class Association Fleet 10 Measurer or his designee.

22. RADIO COMMUNICATION

- 22.1. Each boat shall carry a radio capable of transmitting and receiving on VHF channels 9, 13, 16, and 69. Except in an emergency, a boat shall neither make radio transmissions while racing nor receive radio communications not available to all boats. This restriction also applies to mobile telephones. Courtesy broadcasts to the fleet will be on VHF channel 69.
- 22.2. The courtesy broadcast channel may be changed on the water. Multiple courtesy broadcasts on VHF channel 69 stating the change to the new channel will be made prior to the change.
- 22.3. Assistance from Race Committee - The Race Committee may respond to any questions from sailors even after the race has started and any such answers from the race committee will not be considered outside assistance. Any RC answers are not grounds for protest or redress.

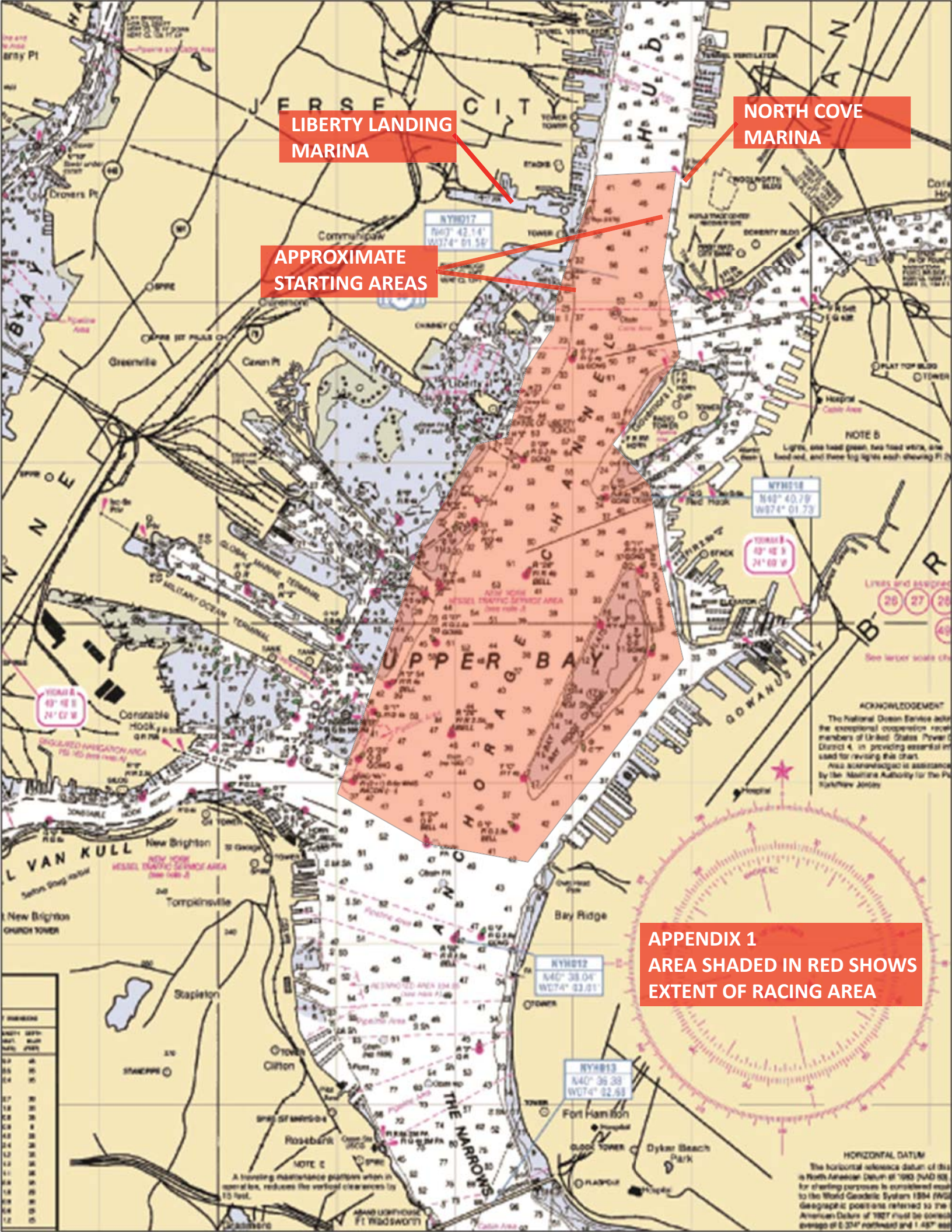
23. PRIZES

- 23.1. Regatta prizes will be awarded to the top 3 teams.
- 23.2. Prizes will be awarded at Manhattan Sailing Club Floating Club House, The North Cove after the conclusion of racing on Sunday, May 20.

Abbreviations used:

AC	Atlantic Cup
CR	Class rules
DNS	Did Not Start
ISAF	International Sailing Federation
LLM	Liberty Landing Marina
PFD	Personal Flotation Device
RC	Race Committee
RRS	Racing Rules of Sailing
SI	Sailing Instruction
USCG	United States Coast Guard
WW	The Honorable William Wall (floating clubhouse)

See attached appendices.



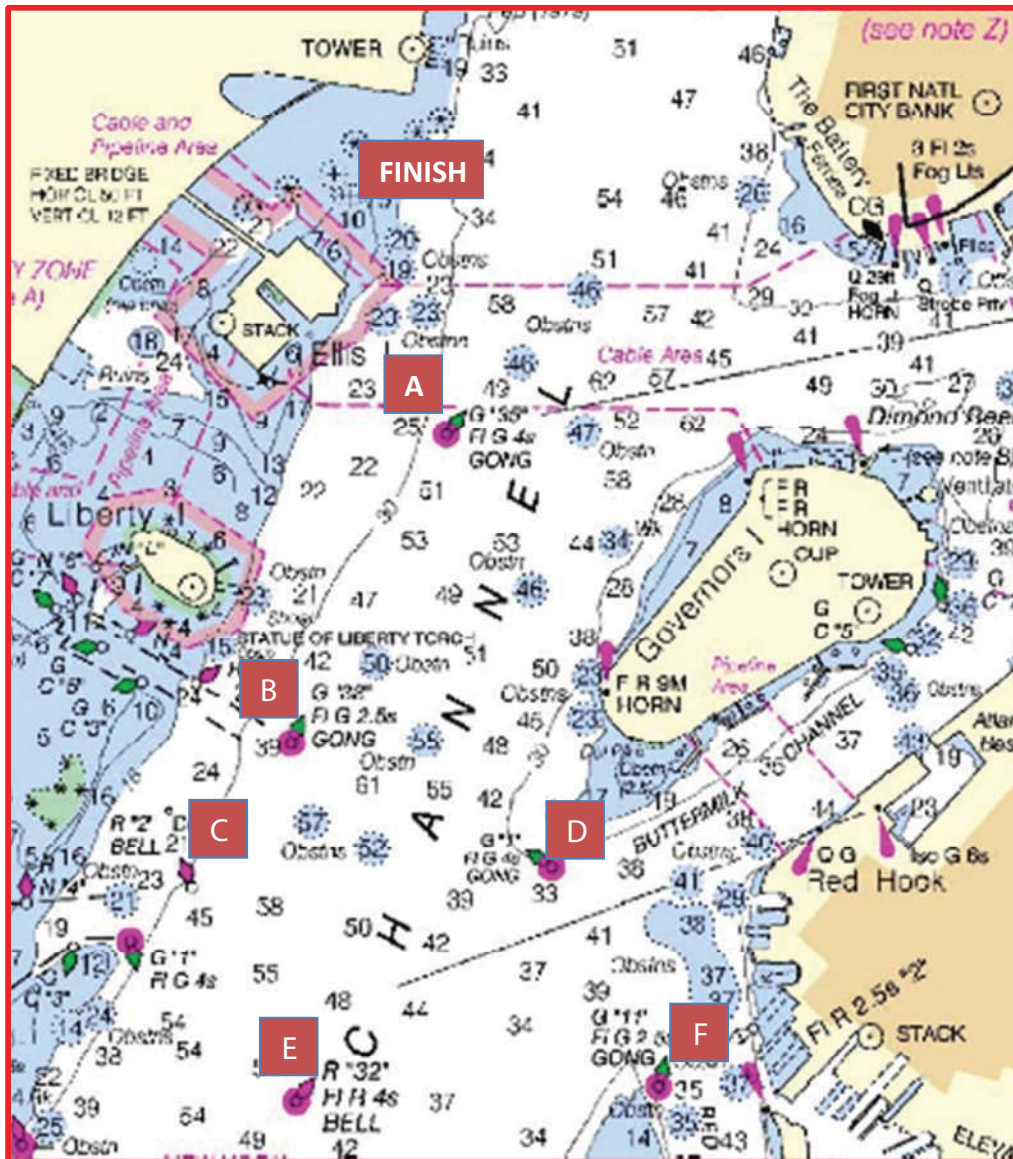
LIBERTY LANDING MARINA

NORTH COVE MARINA

APPROXIMATE STARTING AREAS

**APPENDIX 1
AREA SHADED IN RED SHOWS
EXTENT OF RACING AREA**

Appendix 2 – Government marks course sheet - Manhattan Regatta - 2012



Key to Marks

Start:
Refer to SI's for start location

A - G "35"
FI G 4s GONG

B - G "33"
FI G 2.5s GONG

C - R "2"
BELL

D - G "1"
FI G 4s GONG

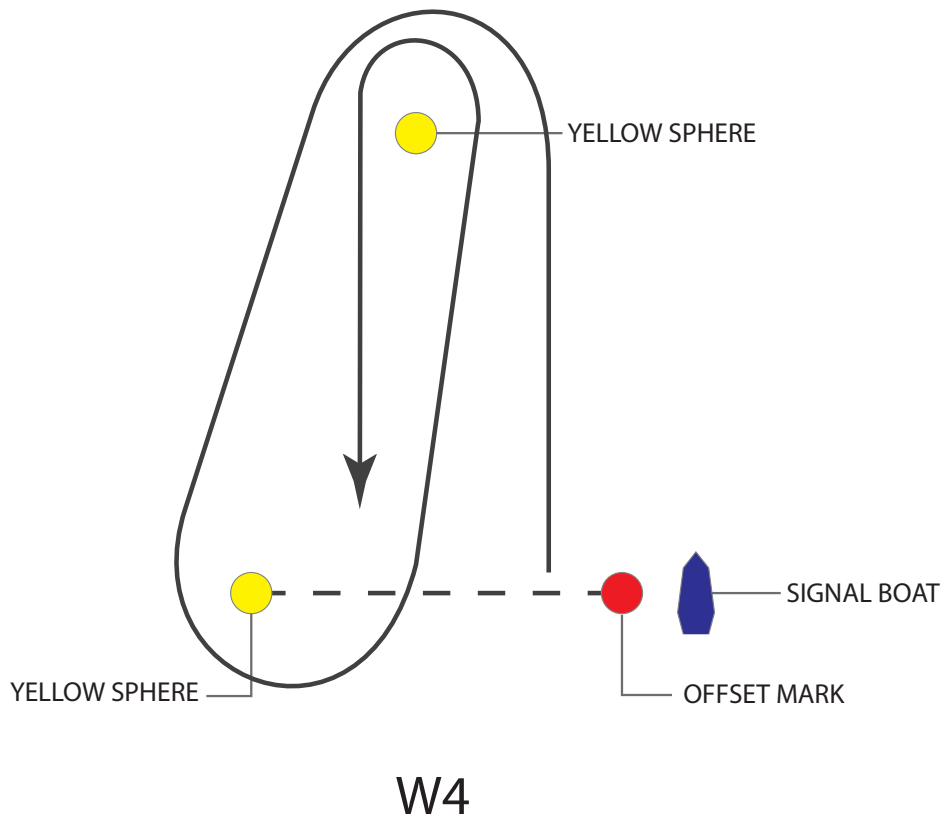
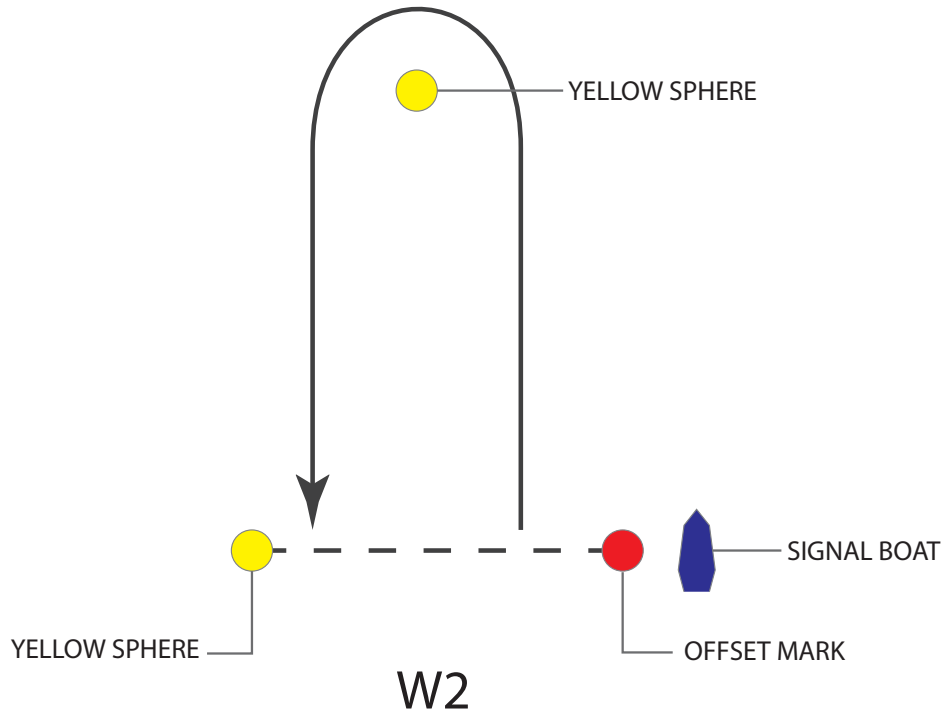
E - R "32"
FI R 2.5s BELL

F - G "11"
FI G 2.5 GONG

Finish
Orange flag on WW
(Floating Clubhouse)
and Yellow sphere

Course #	1st mark	2nd mark	3rd mark	4th mark	5th mark	6th mark	Distance (nm)
1	Bp	Finish					2.2
2	Dp	Finish					2.8
3	Bp	Ap	Bp	Finish			3.7
4	Dp	Ap	Dp	Finish			4.6
5	Bp	Ap	Bp	Ap	Bp	Finish	5.0
6	Bp	Fp	Finish				4.1
7	Cp	Dp	Finish				3.7
8	Bp	Fs	Bs	Finish			4.2
9	Cp	Ds	Cs	Finish			4.5
10	Ds	Cp	Dp	Finish			4.5
11	Fs	Bp	Fp	Finish			5.8
12	Bp	Fp	Bp	Fp	Finish		6.0
13	Cp	Dp	Cp	Dp	Finish		5.5
14	Ds	Cs	Ds	Cs	Finish		5.4
15	Fs	Bs	Fs	Bs	Finish		6.0
16	Cp	Dp	Ap	Bp	Finish		5.0
17	Ds	Cs	As	Bs	Finish		5.1
18	Cp	Dp	Ap	Cp	Dp	Finish	6.5
19	Ds	Cs	As	Ds	Cs	Finish	6.5
20	Special Course announced by Race Committee via VHF radio						

Appendix 3 – Windward/Leeward Courses - Manhattan Regatta 2012



NOTE: Signal boat may be the WW (floating clubhouse) or motor yacht.

Appendix 4 – Security Zones around Statue of Liberty and Ellis Island

